

Prime Chelsea Office / Showroom available for Lease



Partial 5th fl: Approx. 1,950 rentable sf

Rent: Upon request

Possession: October 2020

Description: Bright, recently renovated office located in the Capitol Fur Building.

Built with one large glass conference room. Oversized windows. Tenant-controlled C/A/C, concrete floors, high ceilings. Upgraded wet pantry with dishwasher. Two recently renovated private restrooms.

Large common roof deck accessible by tenants with panoramic skyline views of downtown.

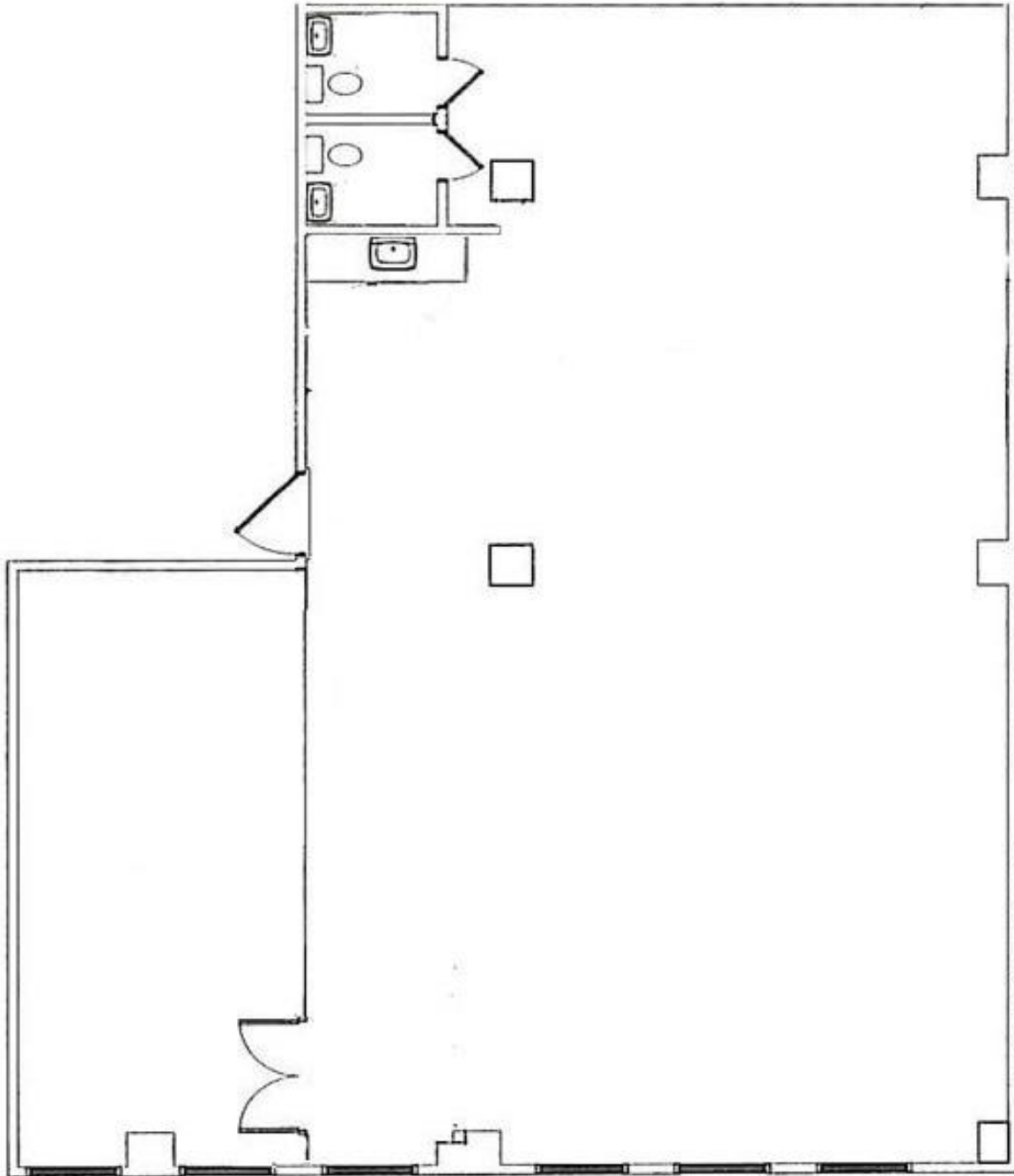
Building undergoing lobby and elevator renovation, with planned completion by the fall. Building features two large passenger elevators, large automatic freight.

Shown by appointment only.

Contact:

Nathan Stange 212-343-1909 x13

nathan@susanpenzner.com



Contact:

Nathan Stange 212-343-1909 x13

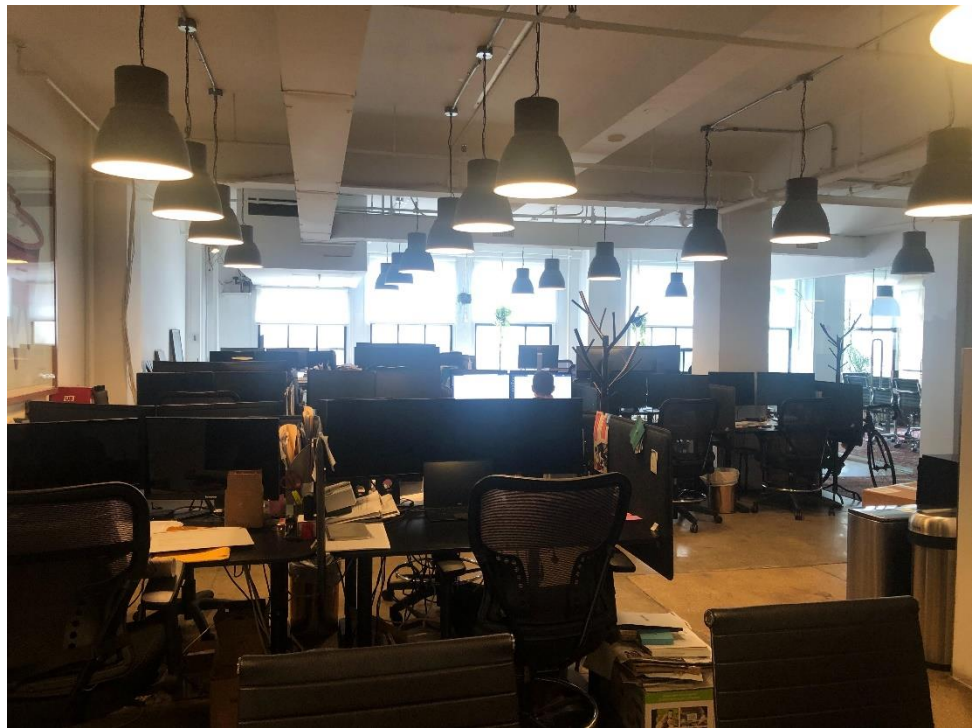
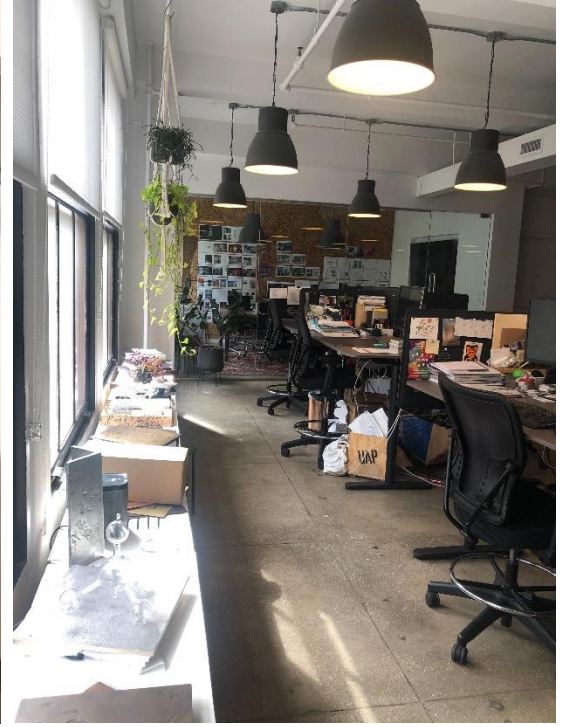
nathan@susanpenzner.com

No representation is made as to the accuracy of any information furnished. All square footage is approximate and based on gross square footage. Offer subject to errors, omissions, change in price, prior sale, and/or withdrawal without notice.

236 W 26th Street

Partial 5th floor

SUSAN PENZNER Real Estate Exclusive



Contact:

Nathan Stange 212-343-1909 x13

nathan@susanpenzner.com

No representation is made as to the accuracy of any information furnished. All square footage is approximate and based on gross square footage. Offer subject to errors, omissions, change in price, prior sale, and/or withdrawal without notice.