

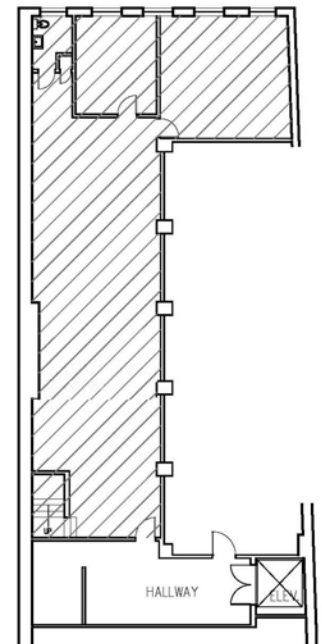
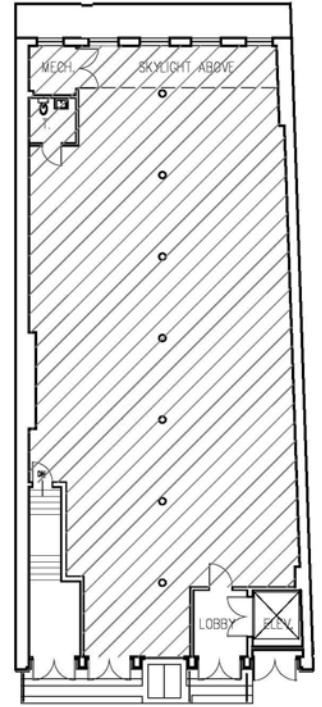
SUSAN PENZNER Real Estate
EXCLUSIVE



83 WOOSTER STREET
PRIME SOHO GROUND FLOOR

83 WOOSTER STREET

BETWEEN SPRING & BROOME



Ground: Approx. 3,600sf
Lower Level: Approx. 2,000sf
Rent: Upon Request
Available: Immediate

Bright, renovated store in the heart of Soho. Excellent visibility steps from Spring
Approx. 40ft wide skylight. Oversized windows in rear. 14ft ceilings. Concrete
floors. New tin ceilings on ground floor. Upgraded electric. Direct access to legal
lower level with excellent storage and large windowed office.

Use group 17. Ideal for design and furniture. All high end, dry uses considered.
Neighbors include Chanel, Gucci, Celine, Moschino, Gentle Monster, and Byredo.

SHOWN BY APPOINTMENT ONLY

Nathan Stange
Associate Real Estate Broker
212 343 1909 x13
917 873 5604
nathan@susanpenzner.com

SUSAN PENZNER Real Estate
EXCLUSIVE

REBNY Although the information regarding property sale, rental or financing is from sources deemed reliable, such information has not been verified and no express representation is made nor is any to be implied as to the accuracy hereof, and it is submitted subject to errors, omissions, change of price, rental or other conditions, prior sale, lease or financing or withdrawal without notice.