

# SUSAN PENZNER Real Estate

E X C L U S I V E

PRIME WEST VILLAGE CONDO • FOR SALE

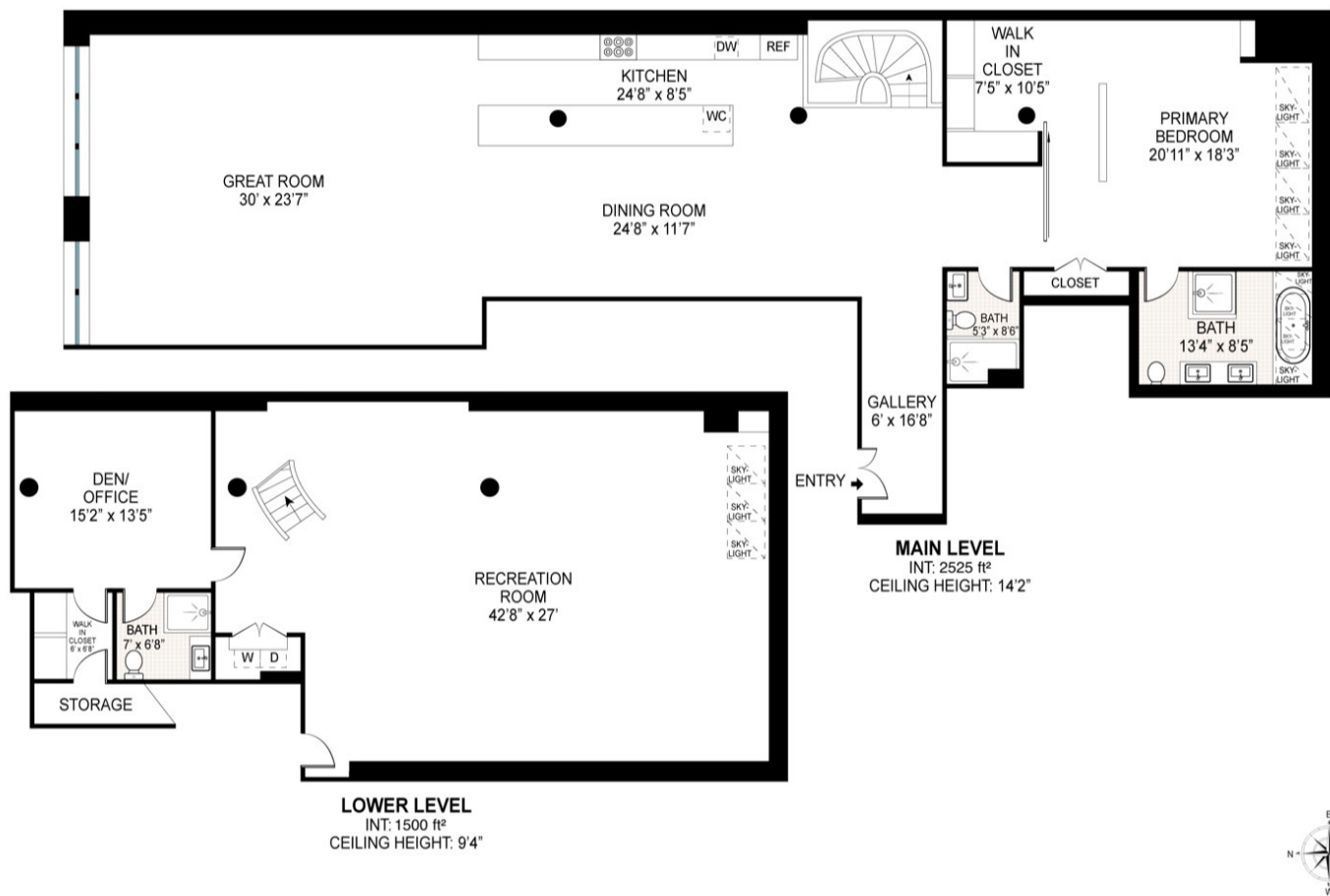


## 140 Perry Street

BETWEEN WASHINGTON AND GREENWICH STREETS

# 140 Perry Street

Between Washington and Greenwich Streets



**Unit 1E:** Approx. 4,000sf  
**Building Type:** Condo  
**Price:** \$6,500,000  
**Common Charges:** Appx. \$2,113/mo.  
**Real Estate Taxes:** Appx. \$2,400/mo.

Rare, pre-war, condo loft opportunity in the most coveted part of the West Village. Approximately 4,000 +/- square feet over two levels with 16 foot ceilings. Large windows look out from above grade first floor onto tree-lined Perry Street. Concrete beams and columns, custom kitchen, sculptural staircase, skylights, endless storage, and museum sized walls. Primary suite with marble bath and skylight. Total two and a half baths plus laundry and HVAC.

Recently designed by AD 100 architect Francis D'Haene of D'Apostrophe.

[Please click on link here to see photos](#)

Susan Penzner  
Principal Broker  
w. 212.343.1909 ext. 11  
m. 917.680.1909  
[susan@susanpenzner.com](mailto:susan@susanpenzner.com)

Michael Berner  
Salesperson  
w. 212.343.1909 ext. 17  
m. 917.868.9593  
[michael@susanpenzner.com](mailto:michael@susanpenzner.com)

**SUSAN PENZNER Real Estate**  
**EXCLUSIVE**

**REBNY** Although the information regarding property sale, rental or financing is from sources deemed reliable, such information has not been verified and no express representation is made nor is any to be implied as to the accuracy hereof, and it is submitted subject to errors, omissions, change of price, rental or other conditions, prior sale, lease or financing or withdrawal without notice.