

SUSAN PENZNER Real Estate

TRIBECA GALLERY OPPORTUNITY



371 BROADWAY
BETWEEN WHITE & FRANKLIN

371 BROADWAY
BETWEEN WHITE & FRANKLIN

TRIBECA GALLERY
OPPORTUNITY



Ground: Approx. 3,000sf total
*Divisible to approx. 2,500sf Gallery
and 500sf south store*

Mezzanine Approx. 700sf

Basement: Approx. 712sf

Rent: Upon request

Available: Immediate

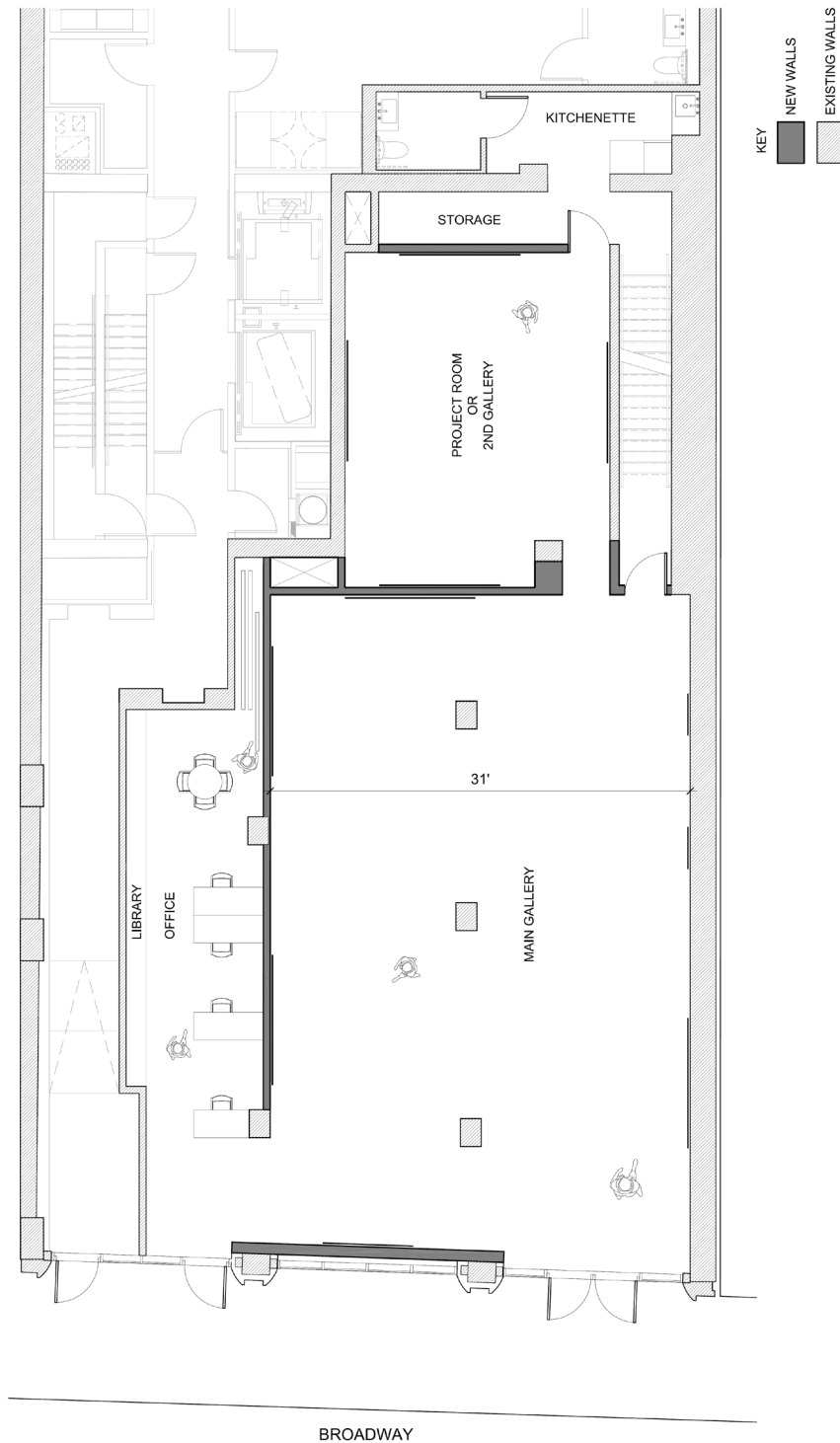
Nathan Stange
Associate Real Estate Broker
212 343 1909 x13
917 873 5604
nathan@susanpenzner.com

Clean, white-boxed space in the heart of Tribeca's gallery district. Approx. 17ft ceilings in main room. Approx. 40ft of frontage. Owner willing to contribute to gallery build-out.

Flexible lease length (short-term considered).

SUSAN PENZNER Real Estate

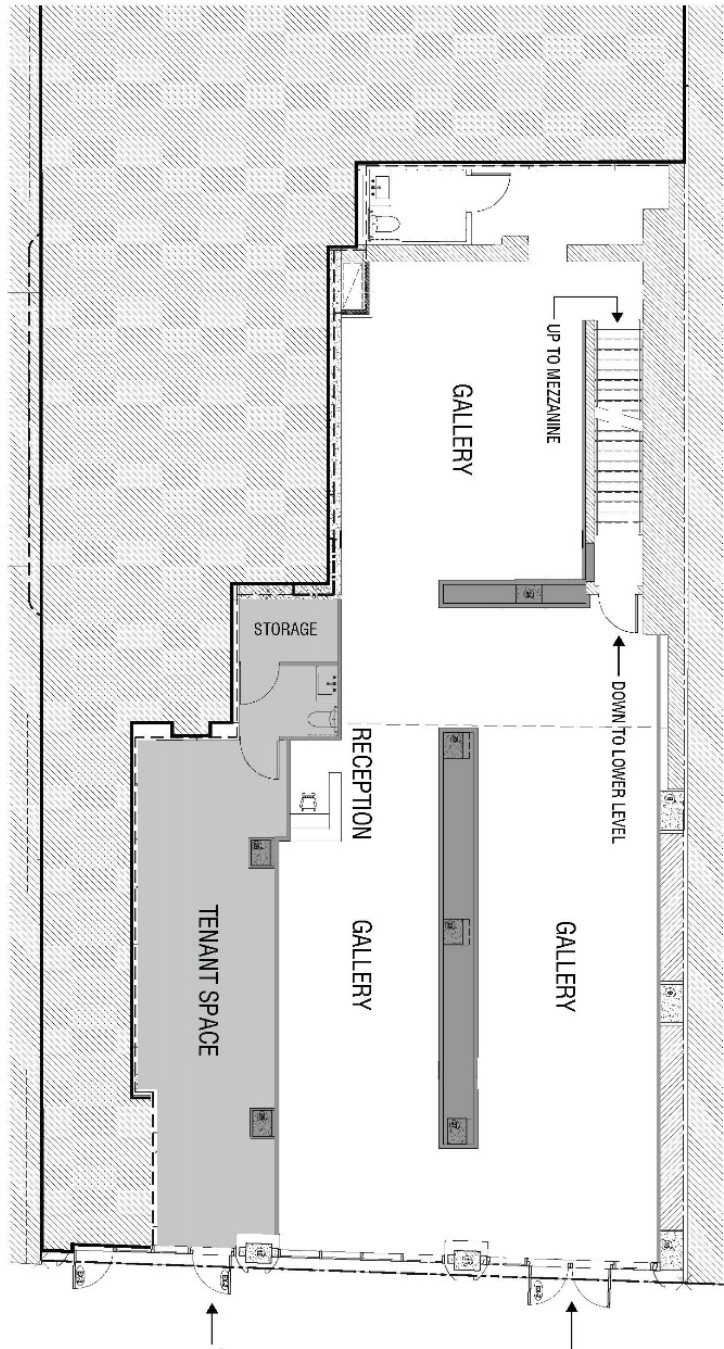
REBNY Although the information regarding property sale, rental or financing is from sources deemed reliable, such information has not been verified and no express representation is made nor is any to be implied as to the accuracy hereof, and it is submitted subject to errors, omissions, change of price, rental or other conditions, prior sale, lease or financing or withdrawal without notice.



Potential Gallery Layout

371 Broadway

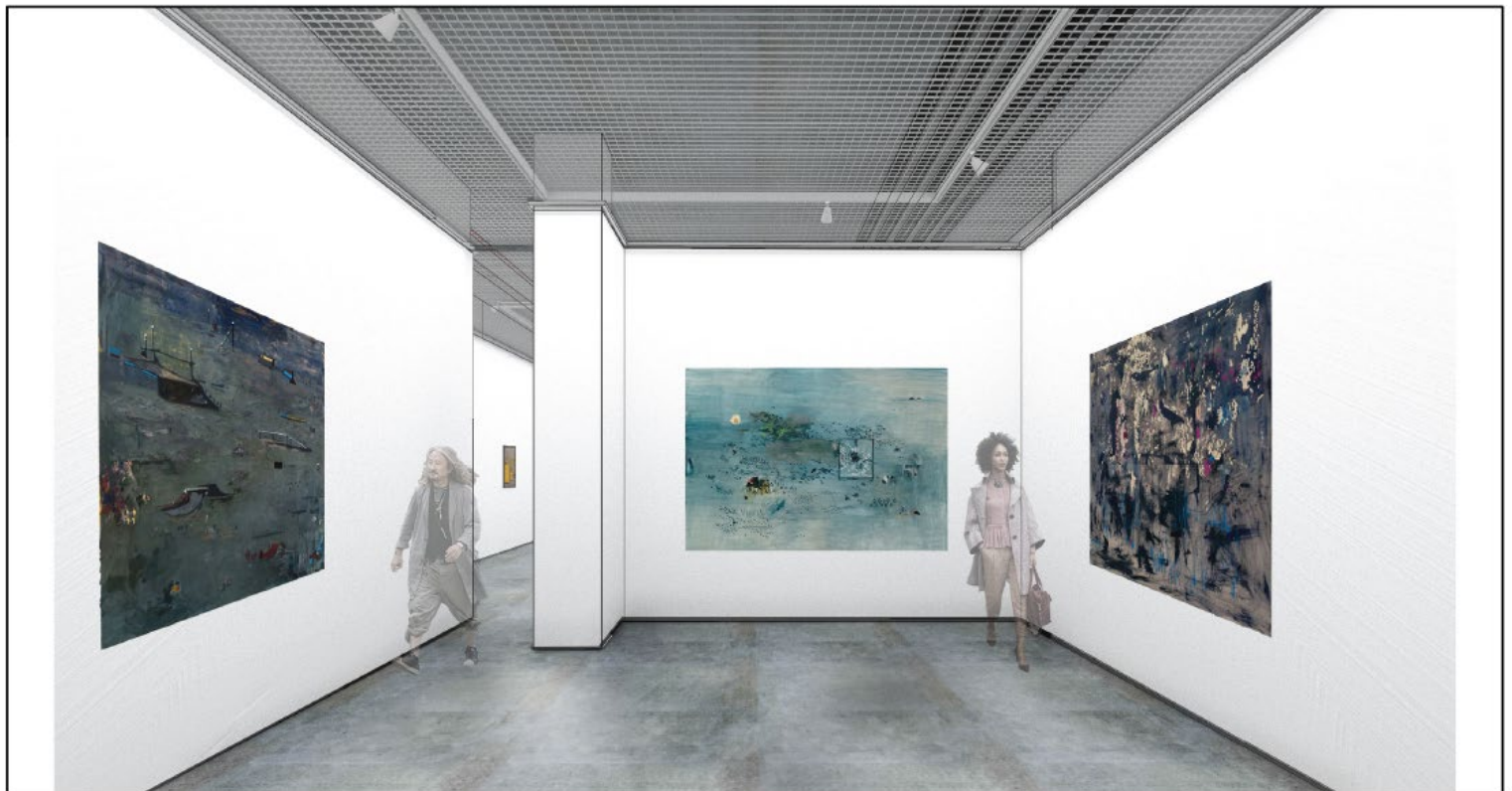
SUSAN PENZNER Real Estate



Possible Ground Floor Divisions
Approx. 2,500sf and 500sf

371 Broadway

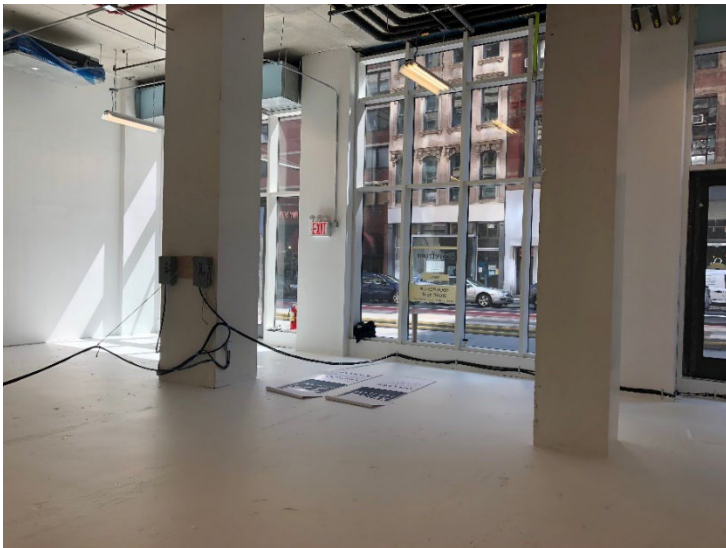
SUSAN PENZNER Real Estate



Potential Gallery Layout Renderings

371 Broadway

SUSAN PENZNER Real Estate



Current Conditions

371 Broadway