

SUSAN PENZNER Real Estate

E X C L U S I V E

Tribeca Gallery-Ready Space For Lease

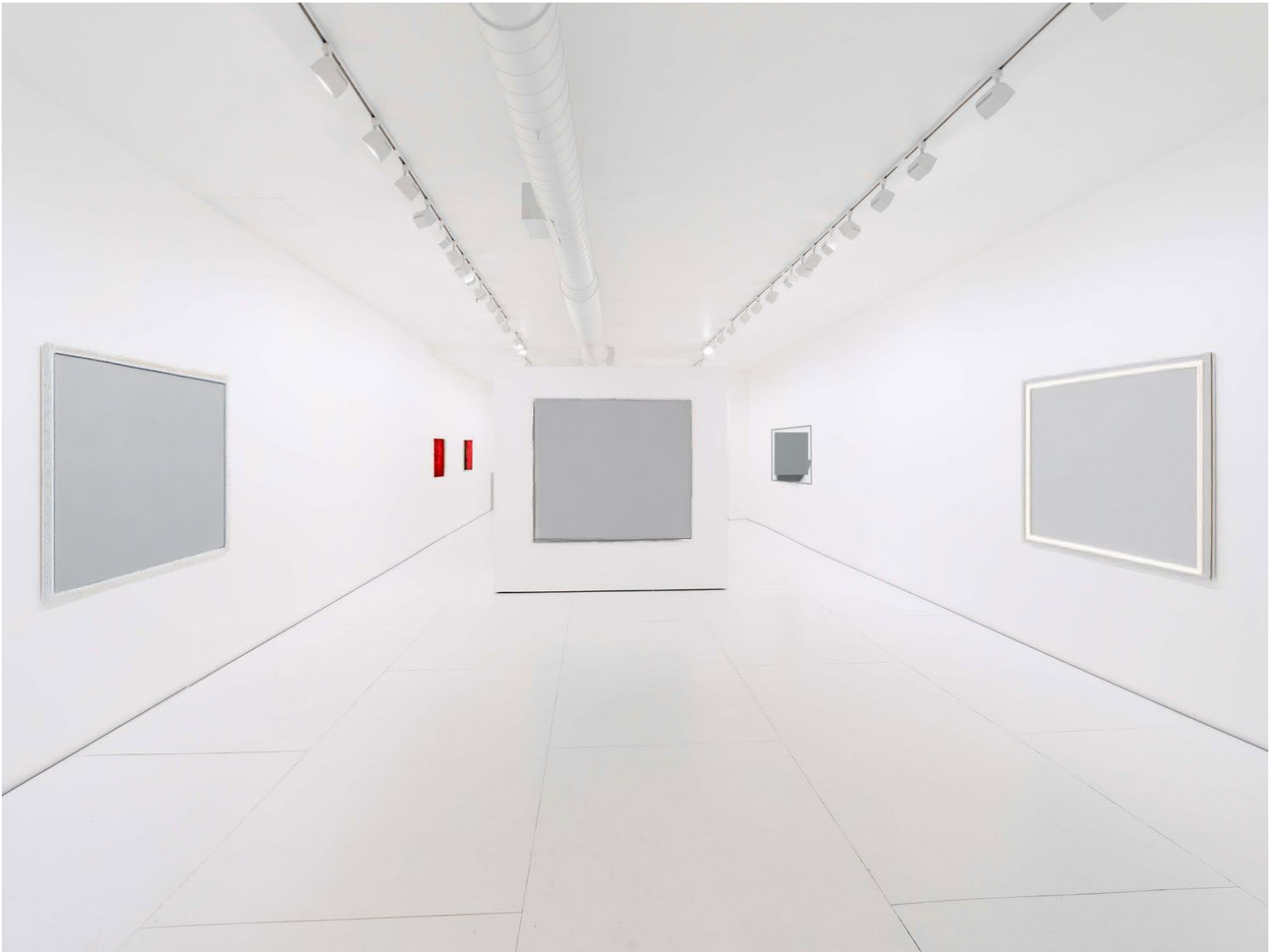


89 Franklin Street

BETWEEN BROADWAY & CHURCH STREET

89 Franklin Street

Between Church & Broadway



Ground : Approx. 2,200 sf
Lower Level: Approx. 2,200 sf
Rent: Upon Request
Availability: Summer 2025
Term: Negotiable

Nathan Stange
Licensed Assoc. Real Estate Broker
212.343.1909 x13
917.873.5604
nathan@susanpenzner.com

Shown discretely, by appointment only. Gallery-ready space available for summer possession. Ideal for furniture, design, art gallery or other quiet, dry use.

Approx. 10'9" finished ceilings on ground. Approx. 10' in basement. Very usable storage basement with windows in rear. C/A/C. Private restrooms and pantry in lower level.

Nearby galleries include Almine Rech, Stephen Friedman, Nicelle Beauchene, Broadway, Klaus von Nichtssagend, & CHART among others. Other neighbors include R & Company, Twenty First Gallery, Ted Muehling, James Perse, Original BTC lighting.

Shown by appointment.

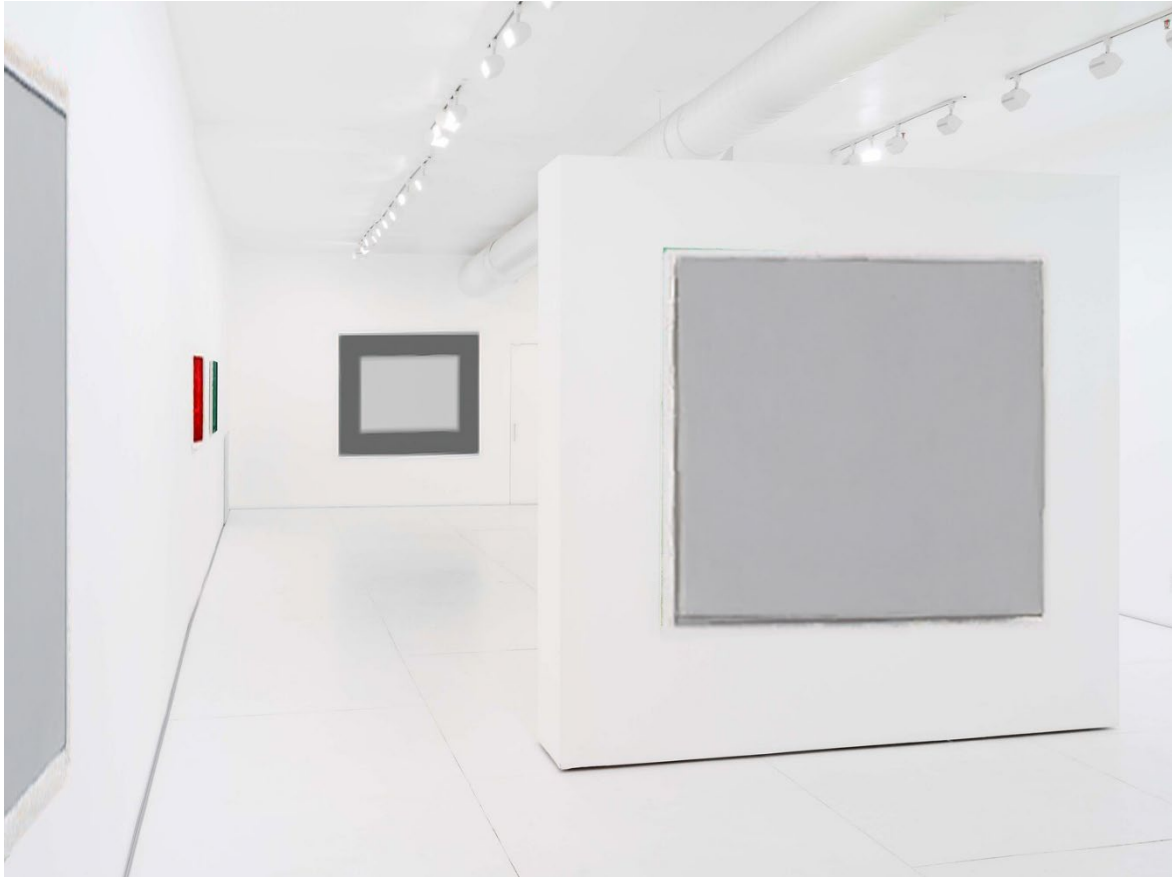
Susan Penzner
Licensed Real Estate Broker
susan@susanpenzner.com

SUSAN PENZNER Real Estate
EXCLUSIVE

REBNY
REAL ESTATE BROKERS ASSOCIATION OF NEW YORK
Although the information regarding property sale, rental or financing is from sources deemed reliable, such information has not been verified and no express representation is made nor is any to be implied as to the accuracy hereof, and it is submitted subject to errors, omissions, change of price, rental or other conditions, prior sale, lease or financing or withdrawal without notice. Photos may be renderings or portray the space in a previous condition.

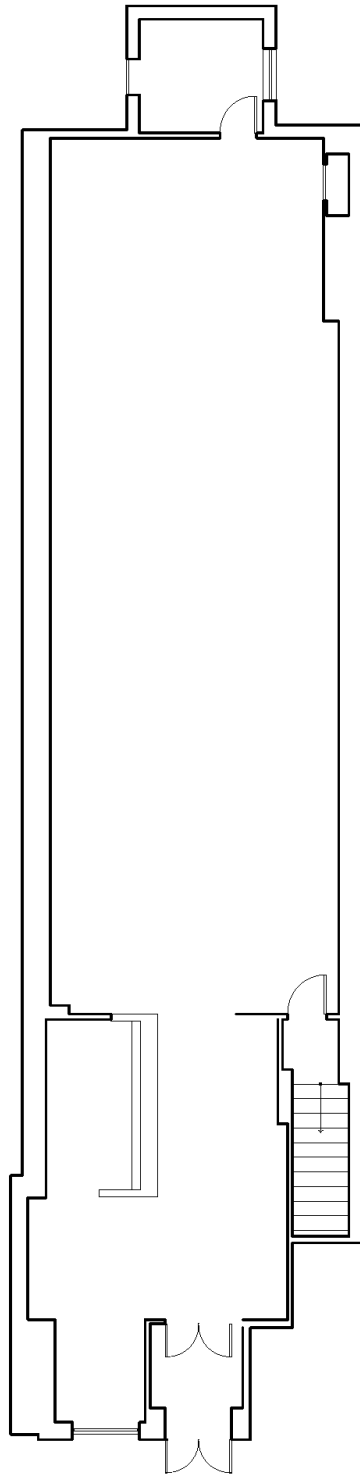
SUSAN PENZNER Real Estate

89 Franklin Street

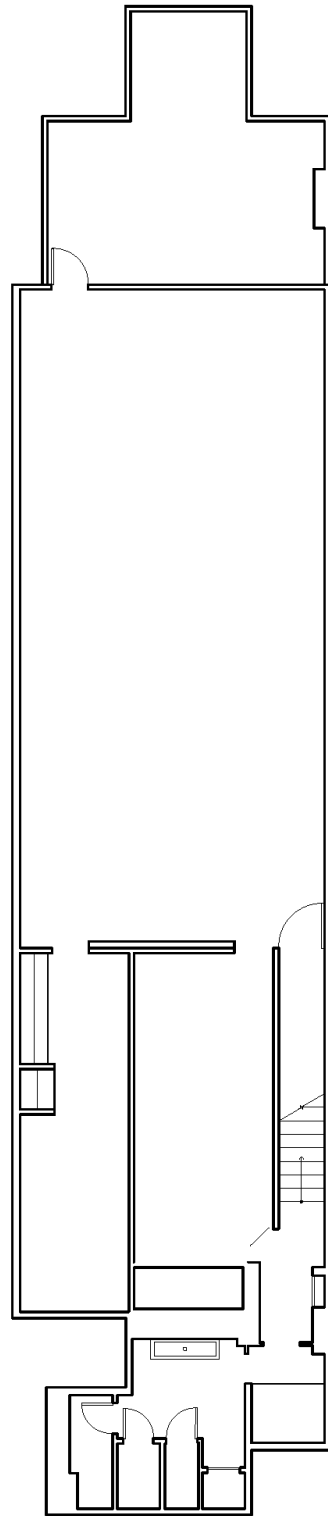


SUSAN PENZNER Real Estate

89 Franklin Street



Ground



Basement