

# 130 Greene Street

## 2<sup>nd</sup> Floor

SUSAN PENZNER Real Estate Exclusive

### Impeccably Renovated SoHo Commercial Loft for Lease



**2<sup>nd</sup> Floor:** Approx. 2,570 rentable sf

**Term:** Negotiable

**Possession:** Immediate

**Rent:** Upon Request

Newly updated, full-floor commercial loft above Caudalie's new luxury boutique spa. Ideal fashion/design showroom, office, by-appointment retail, or photography studio.

Oversized windows front and back. Exceptional light from western and eastern exposures. Newly installed rear windows face beautifully landscaped Zen garden.

Keyed elevator opens directly into the space. Approx. 14ft ceilings. Exposed beams with new acoustical insulation. New hardwood floors. New wet pantry with Miele undercounter refrigerator and dishwasher. Renovated restroom. New windows in rear. New A/C. Storage with washer/dryer in place.

Greene Street features an array of exceptional retailers, showrooms, & offices including Apple, Louis Vuitton, Ralph Lauren, Design Within Reach, FLOS, Brunello Cucinelli, Jenni Kayne among others

**Shown by appointment only.**

**Contact:**

Nathan Stange 212-343-1909 x13

[nathan@susanpenzner.com](mailto:nathan@susanpenzner.com)

Member  
**REBNY**  
REAL ESTATE BOARD OF NEW YORK

No representation is made as to the accuracy of any information furnished. All square footage is approximate and based on gross square footage. Offer subject to errors, omissions, change in price, prior sale, and/or withdrawal without notice.



# 130 Greene Street Floor

2<sup>nd</sup>

SUSAN



No representation is made as to the accuracy of any information furnished. All square footage is approximate and based on gross square footage. Offer subject to errors, omissions, change in price, prior sale, and/or withdrawal without notice.



# 130 Greene Street Floor

2<sup>nd</sup>

SUSAN



No representation is made as to the accuracy of any information furnished. All square footage is approximate and based on gross square footage. Offer subject to errors, omissions, change in price, prior sale, and/or withdrawal without notice.



# 130 Greene Street

## Floor

2<sup>nd</sup>

SUSAN

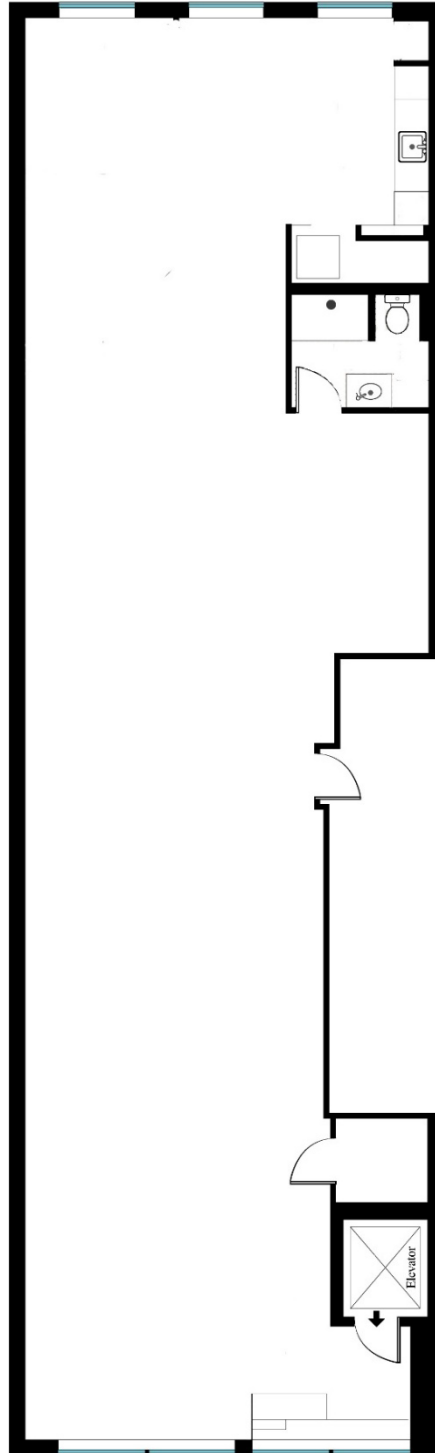


No representation is made as to the accuracy of any information furnished. All square footage is approximate and based on gross square footage. Offer subject to errors, omissions, change in price, prior sale, and/or withdrawal without notice.

# 130 Greene Street

## 2<sup>nd</sup> Floor

SUSAN PENZNER Real Estate Exclusive



Nathan Stange 212-343-1909 x13

[nathan@susanpenzner.com](mailto:nathan@susanpenzner.com)

No representation is made as to the accuracy of any information furnished. All square footage is approximate and based on gross square footage. Offer subject to errors, omissions, change in price, prior sale, and/or withdrawal without notice.