

392 Broadway a/k/a 20 Cortlandt Alley

SUSAN PENZNER Real Estate Exclusive

Tribeca Shared Office available for Sublease



Part 2nd fl: Approx. 1,850rsf

Term: 1-2 years

Rent: \$5,500/mo

Possession: Immediate

Description: Creative space in classic Tribeca loft. Semi-private elevator entrance on Cortlandt Alley, or enter through sublessor's reception on Broadway.

Approx. 14ft ceilings. HVAC.
Hardwood floors.

Common areas include kitchenette, 2 restrooms, and reception area from Broadway entrance.

Note this is a semi-private space that cannot be fully demised for egress issues. Non-locking door may be installed between spaces for visual privacy.

Shown by appointment only.

Contact:

Nathan Stange 212-343-1909x13
nathan@susanpenzner.com

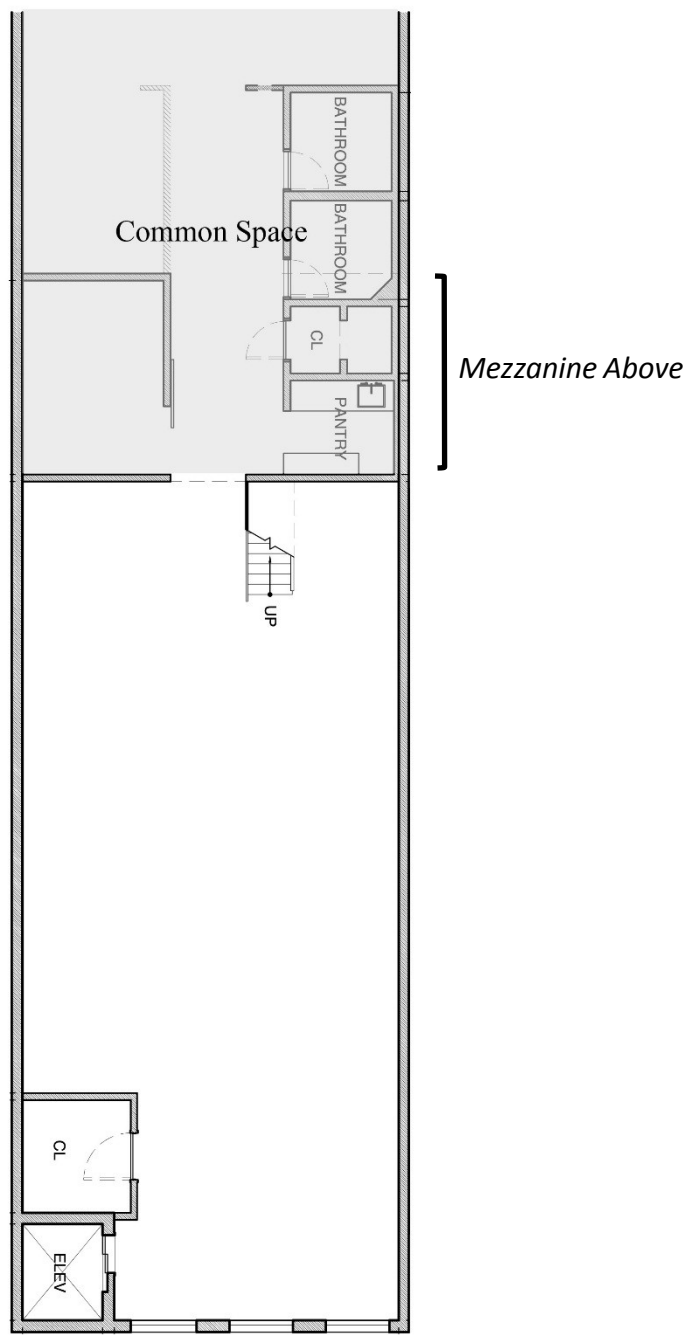
Susan Penzner 212-343-1909
susan@susanpenzner.com



392 Broadway a/k/a 20 Cortlandt Alley

SUSAN PENZNER Real Estate Exclusive

Architect's Office



No representation is made as to the accuracy of any information furnished. All square footage is approximate and based on gross square footage. Offer subject to errors, omissions, change in price, prior sale, and/or withdrawal without notice.

392 Broadway a/k/a 20 Cortlandt Alley

SUSAN PENZNER Real Estate Exclusive

