

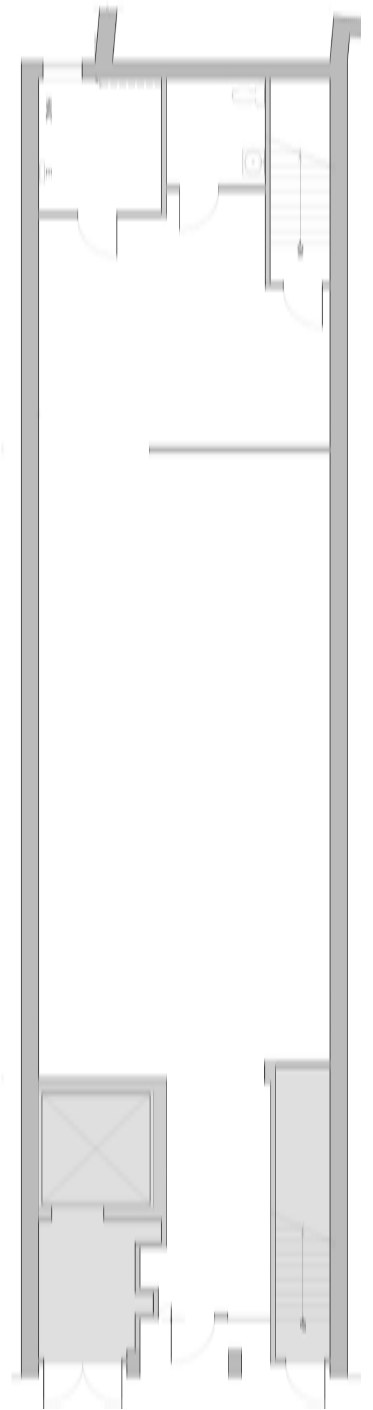
SUSAN PENZNER Real Estate
EXCLUSIVE



31 HOWARD STREET
PRIME SOHO GROUND FLOOR
FOR SUBLEASE

31 HOWARD STREET

BETWEEN CROSBY & LAFAYETTE



Ground: Approx. 2,000sf
Basement: Approx. 100sf
Key Money & Rent: Upon Request
Available: Immediately

Sublease available through 3/31/2023 on Soho's most exciting block. Ground floor and basement storage room.

Recent high end renovation with concrete floors and upgraded lighting. Approx. 13ft ceilings. Concrete floors. All high end, dry uses considered.

Neighbors include the 11 Howard Hotel, Opening Ceremony, Rick Owens, Maison Margiela, and Reformation.

SHOWN BY APPOINTMENT ONLY

Nathan Stange
Associate Real Estate Broker
212 343 1909 x13
917 873 5604
nathan@susanpenzner.com

SUSAN PENZNER Real Estate
EXCLUSIVE

REBNY Although the information regarding property sale, rental or financing is from sources deemed reliable, such information has not been verified and no express representation is made nor is any to be implied as to the accuracy hereof, and it is submitted subject to errors, omissions, change of price, rental or other conditions, prior sale, lease or financing or withdrawal without notice.