

87 Franklin Street

SUSAN PENZNER Real Estate Exclusive

Prime Tribeca Store for Lease



Ground: Approx. 2,000rsf

Basement: Approx. 2,500sf
*plus approx. 2,200sf
subbasement*

Term: Negotiable

Rent: \$25,000/mo

Possession: Immediate

Nathan Stange 212-343-1909 x13
nathan@susanpenzner.com

Former showroom. Suitable for gallery or any dry use. Approx. 13ft finished ceilings on ground and approx. 11ft lower level. Large skylight and windows on ground level. C/A/C. Private restrooms and pantry in place.

Nearby galleries include CHART, Nicelle Beauchene, Postmasters, Bortolami, James Cohan, Luhring Augustine among others. Neighbors include R&Company modern furniture, Twenty First Gallery, James Perse, Rag & Bone.

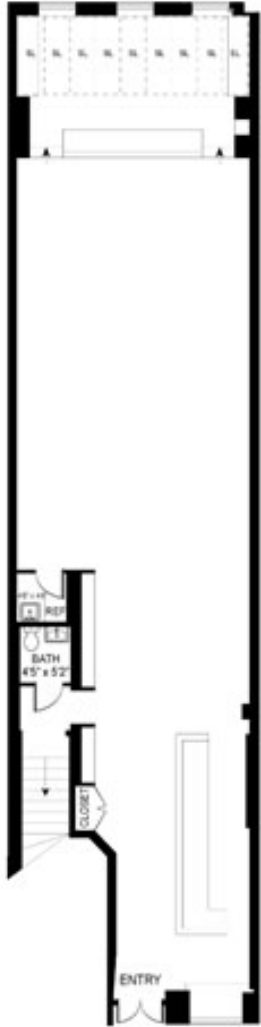
Shown by appointment

REBNY^{Member}
REAL ESTATE BOARD OF NEW YORK

No representation is made as to the accuracy of any information furnished. All square footage is approximate and based on gross square footage. Offer subject to errors, omissions, change in price, prior sale, and/or withdrawal without notice.

87 Franklin Street

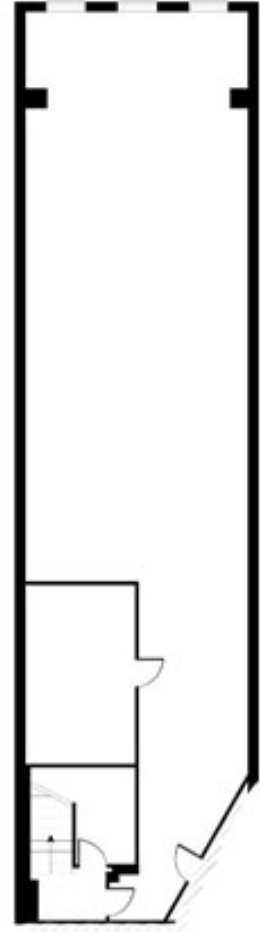
SUSAN PENZNER Real Estate Exclusive



Ground



Basement



Sub-basement

No representation is made as to the accuracy of any information furnished. All square footage is approximate and based on gross square footage. Offer subject to errors, omissions, change in price, prior sale, and/or withdrawal without notice.