

153 Chambers Street

Between Greenwich Street & West Broadway

Tribeca Store—All Uses Considered



Ground: Approx. 1,600sf

Basement: Approx. 1,355sf

Term: Negotiable

Rent: \$18,500/mo

Possession: Immediate

Contact:

Nathan Stange 212-343-1909 x13

nathan@susanpenzner.com

Highly visible location on one of Tribeca's best thoroughfares.

Near Stuyvesant HS & Borough of Manhattan Community College.

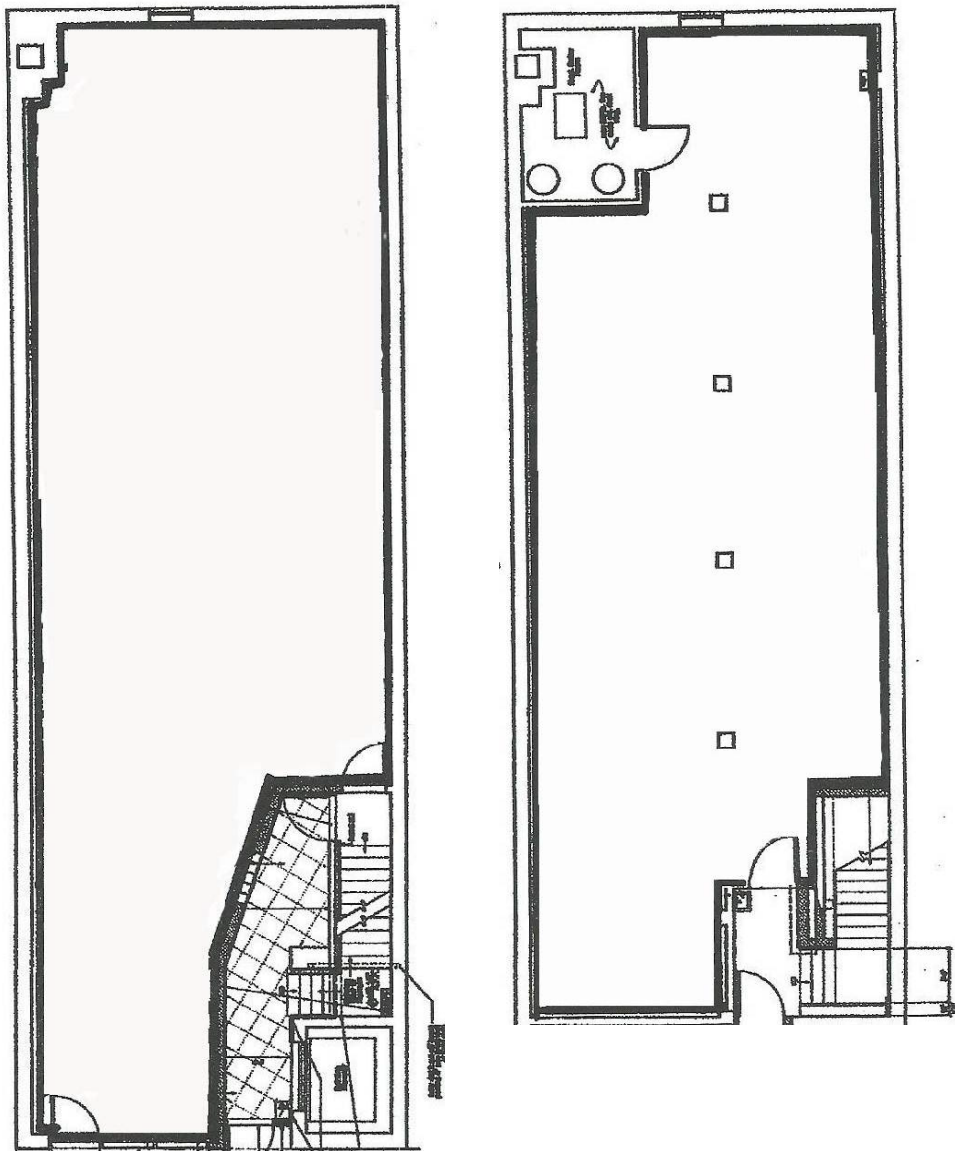
Ground floor features high ceilings, C/A/C. Excellent signage opportunity outside landmark district.



50/50 Cobroke of one commission. No representation is made as to the accuracy of any information furnished. All square footage is approximate and based on gross square footage. Offer subject to errors, omissions, change in price, prior sale, and/or withdrawal without notice.

SUSAN PENZNER Real Estate Exclusive

153 Chambers Street



Contact:

Nathan Stange 212-343-1909 x13

nathan@susanpenzner.com



50/50 Cobroke of one commission. No representation is made as to the accuracy of any information furnished. All square footage is approximate and based on gross square footage. Offer subject to errors, omissions, change in price, prior sale, and/or withdrawal without notice.