

SUSAN PENZNER Real Estate

E X C L U S I V E



110 Mercer Street

Rare Small Space in the Heart of Soho

110 Mercer Street

Between Spring & Prince Streets

- Ground:** Approx. 1,445sf
*approx. 1,145sf existing plus
approx. 300sf additional*
- Frontage:** Approx. 20ft
- Rent:** Upon Request
- Availability:** Immediate

New opportunity in the heart of Soho. Approx. 20ft of frontage on one of Soho's premier fashion blocks. Existing signage includes blade sign as well as awnings. Potential for additional signage, subject to Landmarks approval.

Two large display windows with excellent visibility into the space, which is approx. 8 steps below street level.

Elevator accessible at street level.

Approx. 15ft ceilings. HVAC in place.

Located adjacent to the Judd Foundation. Neighbors include Vuori, Dr. Barbara Sturm, Rag & Bone, Frankie's Bikinis, Balenciaga, Lanvin, Agent Provocateur, Meermin, among others.

Nathan Stange
Licensed Assoc. Real Estate Broker 212
343 1909 x13
917 873 5604
nathan@susanpenzner.com

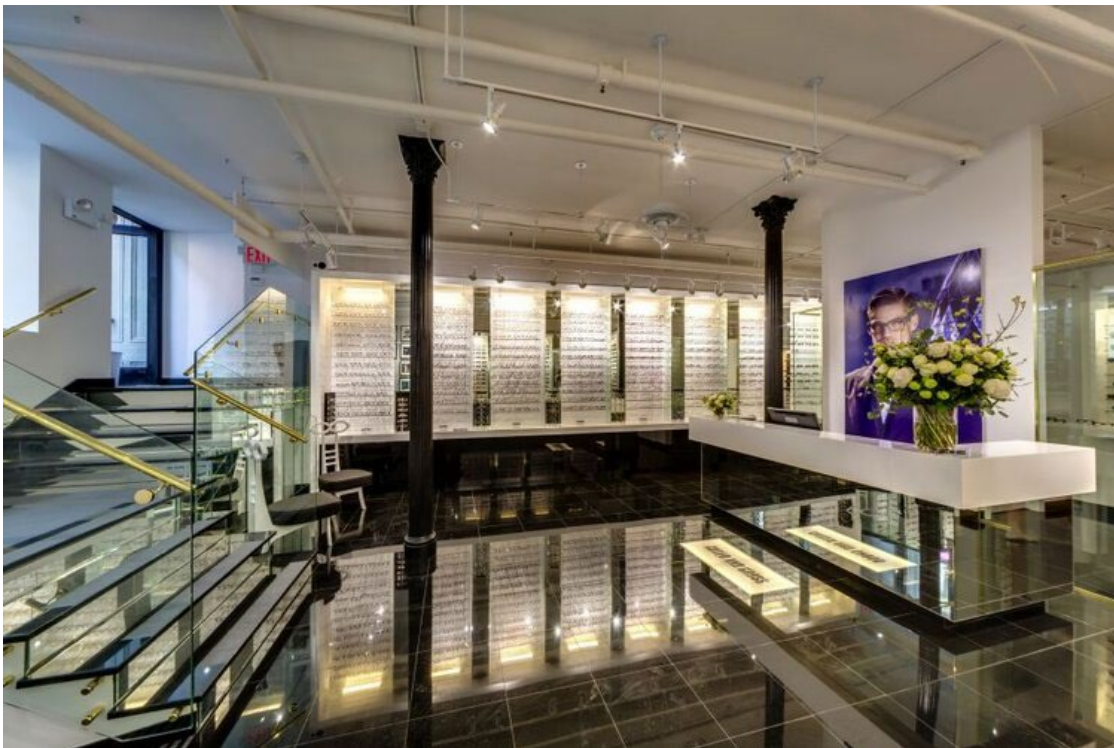
SUSAN PENZNER Real Estate
EXCLUSIVE

REBNY
Although the information regarding property sale, rental or financing is from sources deemed reliable, such information has not been verified and no express representation is made nor is any to be implied as to the accuracy hereof, and it is submitted subject to errors, omissions, change of price, rental or other conditions, prior sale, lease or financing or withdrawal without notice.



SUSAN PENZNER Real Estate

E X C L U S I V E

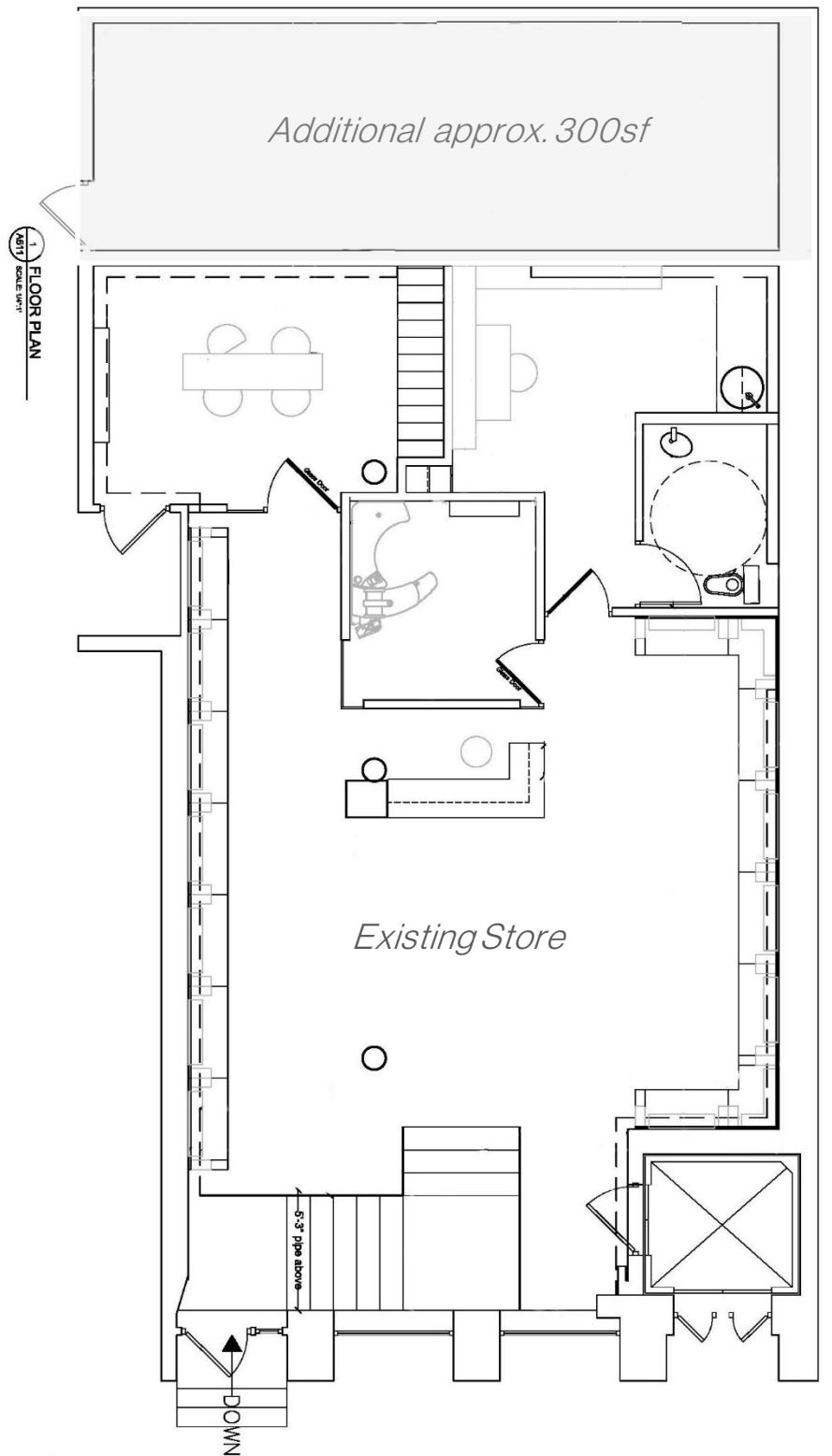


110 Mercer Street

Rare Small Space in the Heart of Soho

SUSAN PENZNER Real Estate

E X C L U S I V E



110 Mercer Street

Rare Small Space in the Heart of Soho